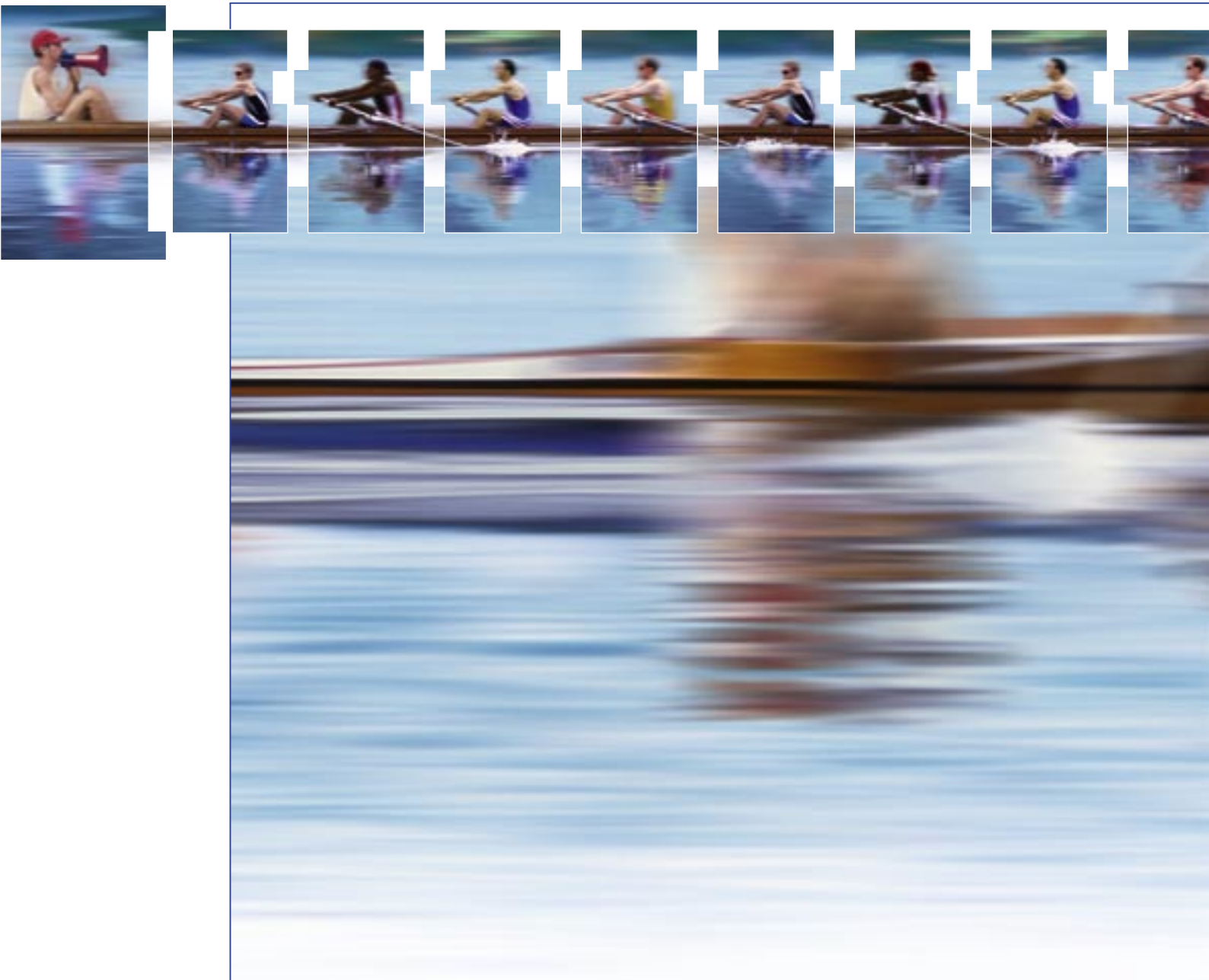


Performance as much as you need

A new dimension of flexibility: the AC500 scalable PLC



ABB

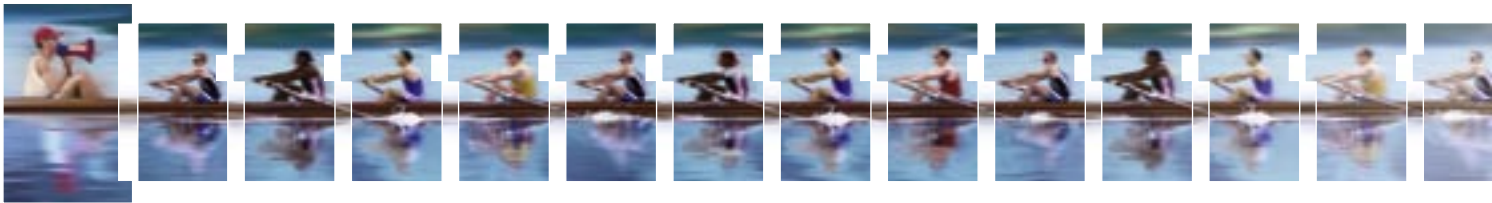
The new AC500 PLC: the goal is maximised success

In rowing, it's the cox who's in command.

He keeps the boat on course, and gets maximally rhythmical speed out of his oarsmen. Many races are won only because the cox has got the very best out of his crew. It's not enough just to manipulate the rudder. The cox has to perform crucial tasks of management. And the most important of these is unambiguous, comprehensive communication. If he gives clear commands, he's the master of his boat – and success will come along almost of its own accord!

If automation is the goal, this is the predestined role of the Advant Controller 500 (AC500). The new, innovative system from ABB is the control centre for all automation jobs – whether as a decentralized component or as a central control system for handling ultra-complex automation jobs. With the scalable AC500 system, ABB has rounded off its extensive range of switching and control technology, and now offers you a harmonized portfolio of responsively sophisticated automation packages.





A maximum of options for all-round benefits

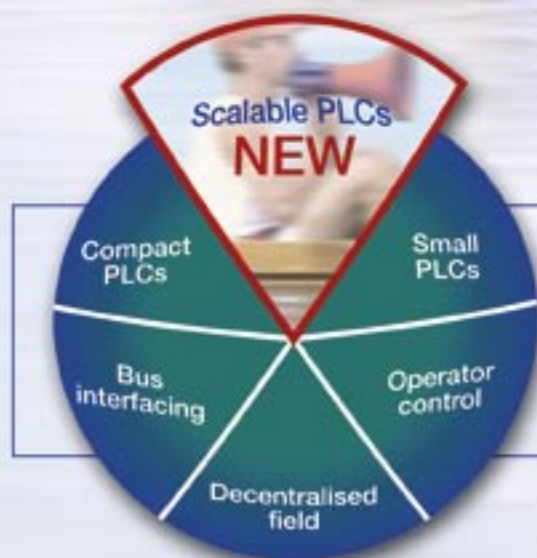
Optimized processes, minimised costs, higher profitability – the AC500 offers you a maximum of options for ensuring that crucial bit of extra added value. The wide choice of communication couplers enables you to customize the automation system to suit your own individual requirements. Thanks to the AC500's scalability and its modularized platform concept, you can configure precisely the automation system you need. It's these unique advantages that render the AC500 so enormously cost-efficient, safe and user-friendly.

The AC500 – persuasive advantages

- Scalable control
- Wide choice of communication and field bus couplers
- User-selectable coupler types for simultaneous operation
- Fast replacement thanks to plug-in modules
- A single software package for the entire range
- Seamless integration of control system and field devices
- Attractive price-performance ratio

First choice everywhere

Its functionalities make the AC500 the first choice in widely different markets and application categories – for building automation and the food industry, for cranes and machinery, for tunnel monitoring and marine applications, and for environmental engineering as well.



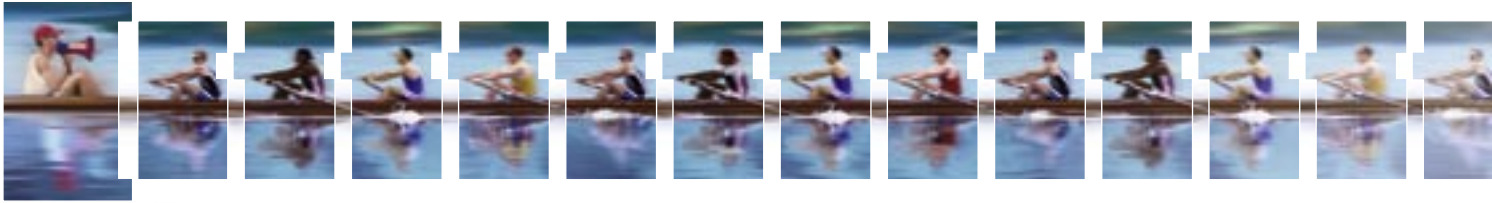
Scalable intelligence pays off

The new, innovative automation system is a persuasive choice out of purely financial considerations alone. With its AC500, ABB provides you with options for integrating and upgrading your automation systems with cost-optimized flexibility. The system can be simply expanded at will, thus reducing your initial outlay and ensuring a swift return on your original investment. Fast commissioning based on Plug & Play results in low installation costs.

Profit from maximized solutional multiplicity

The AC500 completely redefines the term "flexibility". By virtue of its up-to-the-future field bus plug technology, the field-bus-neutral system can be easily connected up to almost any desired field bus. Its scalability offers a maximized multiplicity of solutions for accurate handling of every automation job – all that's needed is a quick replacement of the CPU or simply





Built-in future-compatibility

The AC500 automation system scores in terms of maximally open future-compatibility. Integration into ABB's IndustrialIT world enables its users to benefit from the manifold options provided by Aspect Objects technology, and ensures that the system can be simply integrated and effectively interfaced with other ABB products.

expansion using I/O modules. ABB has thus met its customers' forceful requests for individually tailored automation systems, with concomitant enhancement of market opportunities and growth potentials.

The small number of modules means fewer spare parts and correspondingly low storage costs. Since only one standardized software package and consistently harmonized hardware are used for the entire AC500 range, the outlay for software, training and support is reduced to a minimum – intelligence that pays off for you!

Requirement-matched performance

The AC500 enables the performance of your automation system to be responsively matched to the actual requirements involved, with subsequent scalable expansion at will.



Firmly on course for systems and investment

The AC500 is a perfect example of a dependable, future-friendly concept for integrated automation. The synergetically harmonized interaction of clear system structure, tightly defined interfaces, ultra-simplified wiring, and a familiar programming environment, ensures optimally reliable operation combined with maximized availability.

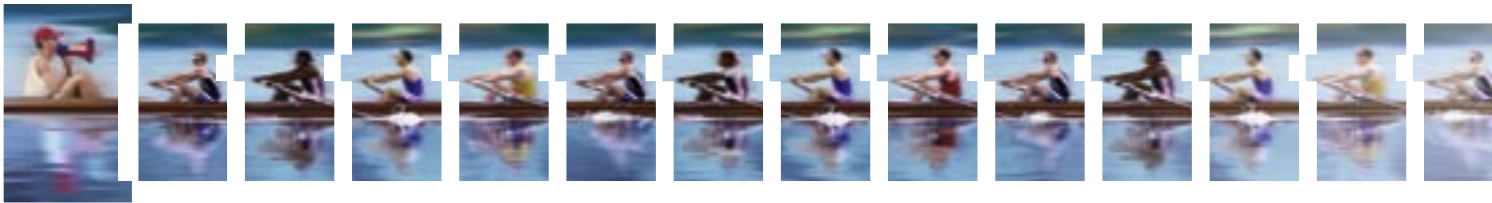


The planners' task made easy

The intelligent field and control devices are seamlessly integrated into the AC500 automation system simply by selecting the appropriate field bus plug.



The plug-in design (of the I/O modules) enables the modules to be replaced quickly and easily without having to make changes in the wiring, so that the configuration can be conveniently



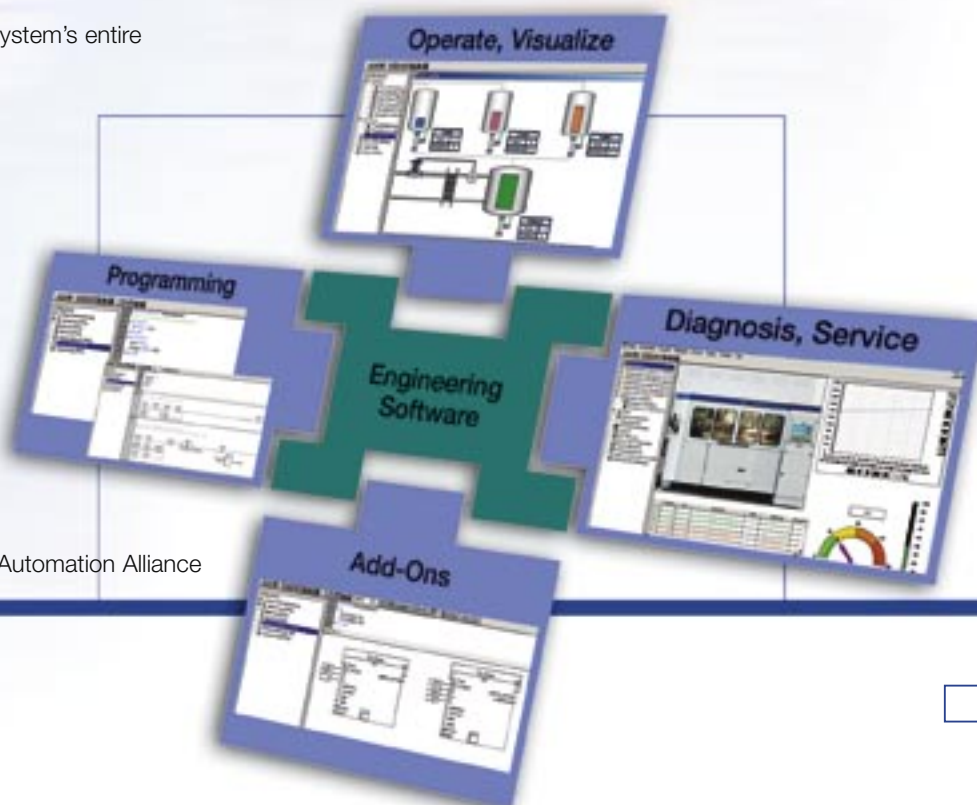
modified to suit future requirements as well. This provides reassuring certainties for the planning engineers and keeps your investment safeguarded over the automation system's entire useful lifetime.

The AC500's clear system structure means that service work is significantly simplified. Anyone able to program a CPU will have no trouble in programming any other device in the AC500 series as well. The system is just as uncomplicated in terms of software: only a single programming software package is required for the entire range, and this is based on the widely

used and thus familiar open, cross-manufacturer standard IEC 61131-3.

Dependable diagnostics are of course included

The AC500 offers its users extensive diagnostic options. The system's user-friendly diagnostics are software-based, with local indication using LEDs, plus an easy-read display.



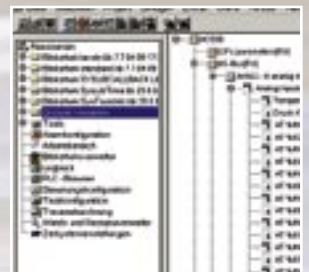
Member of Automation Alliance

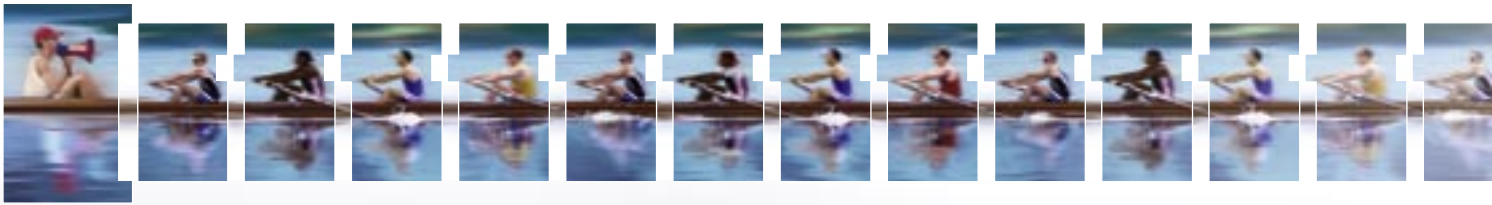
The user-friendly AC500 PLC: principled simplicity

The intelligent AC500 automation system grows to match the rising complexity of the application or task involved. Fast and effortlessly: the AC500's easy installation, with expansion facilitated by swift replacement of the CPU or by plug-in communication couplers and I/O modules, ensures ultra-simple handling, minimized erection times, translating the ideal of scalable control systems into tangible reality.

User-friendly engineering included

Thanks to easy expansion options, the automation systems can be conveniently optimized at will, to bring them up to the very latest state of the art. The AC500's modularized construction, plus the flexible engineering of the I/Os right up to the end of the commissioning phase, provide maximum reassurance for the planning team. The harmonized system software restricts the training required to a convenient minimum.





If you want to start off in a “small” way with the AC500, the starter configuration “Micro” already incorporates all the communication options provided by the larger CPUs – as a central or decentralized automation component, as master and/or slave.

And don’t be misled by the term “Micro”: with 128-KB memory, even the smallest version provides plenty of capacity for large programs and data quantities.

Plug & Play in the best sense of the phrase

“Fast connection guaranteed” – that’s the AC500’s installation concept in brief. The modules can be swiftly and simply mounted on DIN busbars or screwed in place. You connect your sensors and actuators in 1-, 2- or 3-wire design, quickly and conveniently using screw or spring terminals.

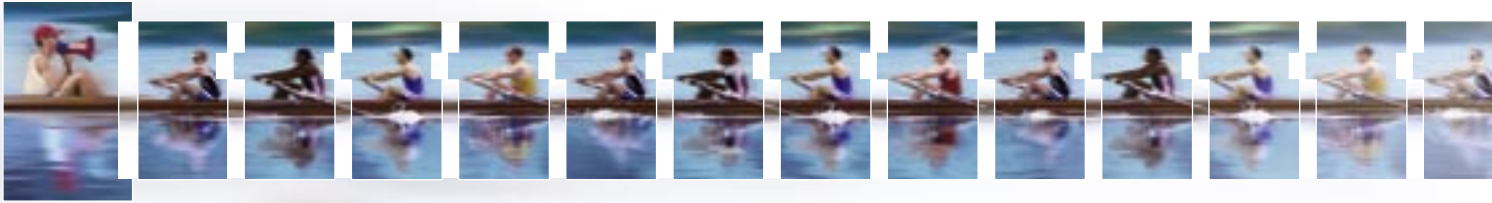


The AC500 scalable PLC: a new dimension of flexibility

Can be connected to practically any bus

The simple FBP installation concept is the key to the system's extensive communication capabilities. The bus-specific field bus plug enables the bus-neutral I/O system to be connected up effortlessly to the field bus systems in common use. The AC500's comprehensive integration capabilities mean it can be easily incorporated into an existing higher-order system.





CPU

AC500 Mini
AC500 Midi
AC500 Micro



Customized configuration



Input and Output



Decentralized field





Comprehensively customer support

ABB draws upon its long years of experience in low-voltage engineering to provide a comprehensive range of support services available worldwide. You can call upon contact persons in our country sales offices. For all questions to do with automation engineering you can also contact our helpline teams by phone, fax or email.

Special seminars and training courses are offered for many ABB-products and systems, not least covering the automation of machinery and production lines. On request, we will also be pleased to provide on-the-spot training at your own premises.

Just talk to your regional consultant.



ABB STOTZ-KONTAKT GmbH
P. O. Box 10 16 80
D-69006 Heidelberg
Telephone: ++49 62 21 / 701-0
Telefax: ++49 62 21 / 701-729
<http://www.abb.de/stotz-kontakt>

ABB Entrelec - Control Division
184, rue Léon Blum
F-69100 Villeurbanne / France
Telephone: ++33 (0) 4 72 35 35
Telefax: ++33 (0) 4 72 35 12
<http://www.abb.com/lowvoltage>

ABB Global Contact Directory

The ABB Contact Directory (<http://www.abb.com/contacts/>) helps you find local contacts for ABB products in your country. Please select the relevant product group from the dropdown menu to the right or from the page.